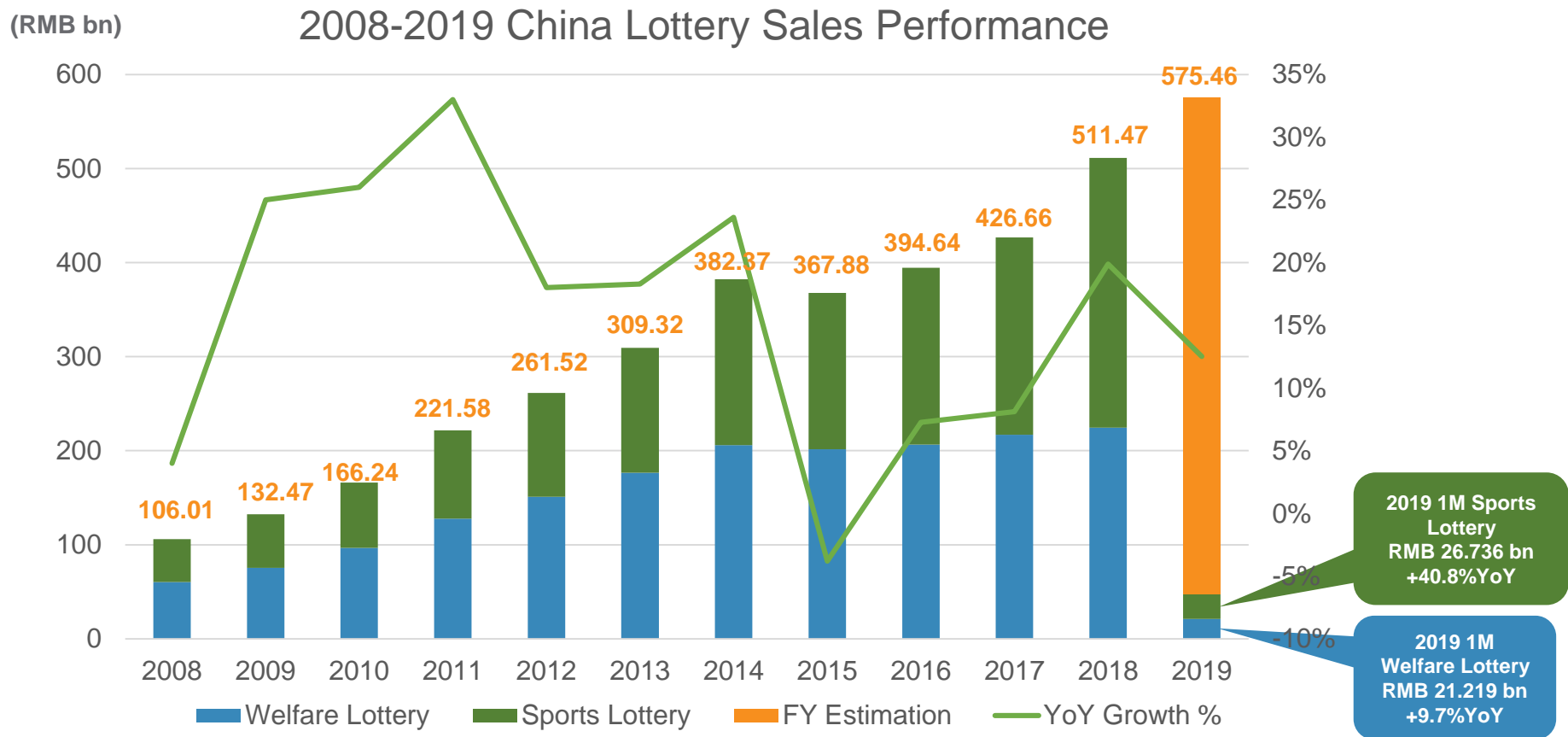


# China Lottery Sales Performance

Total sales of China lottery in Jan 2019 increased by 25.1% YoY to RMB 47.955 billion.

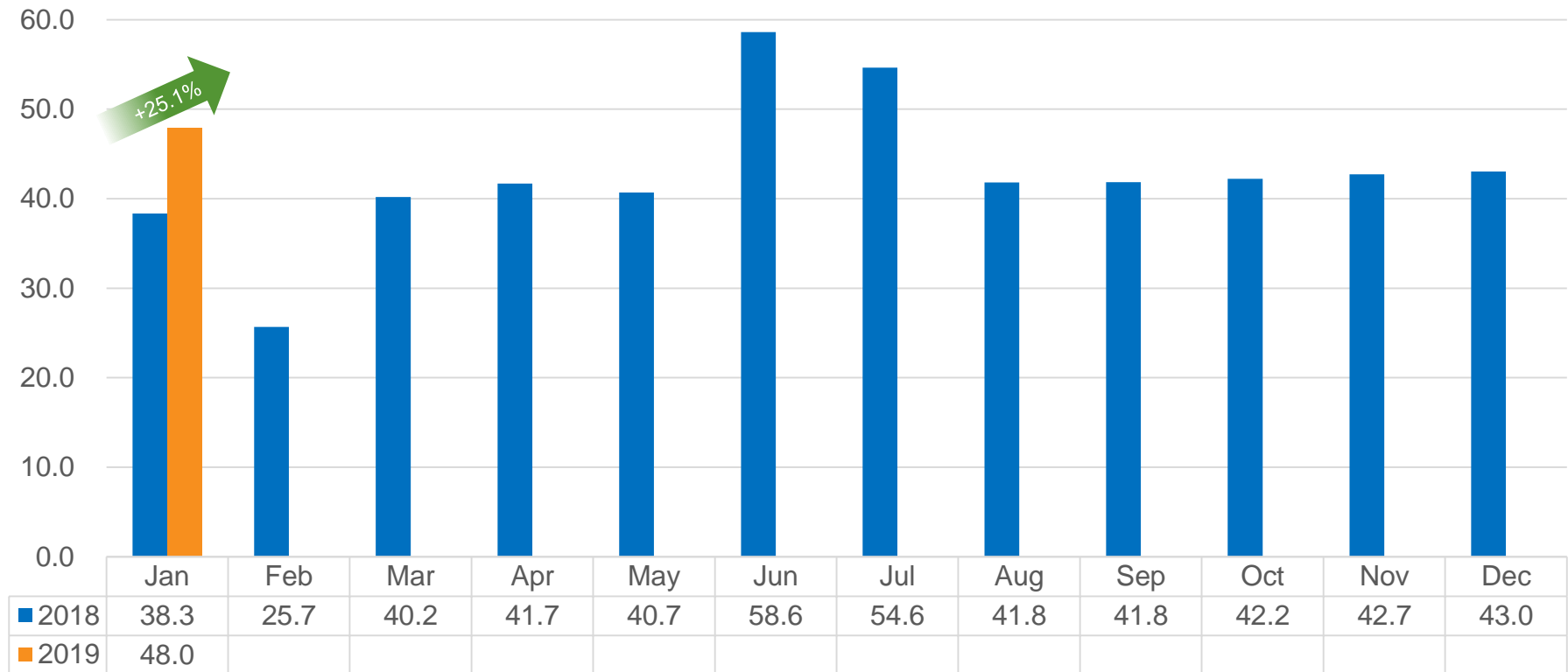


Source: Ministry of Finance (Exclude FY Estimation)

# China Lottery Sales Performance

## 2019 vs 2018 Monthly Lottery Sales

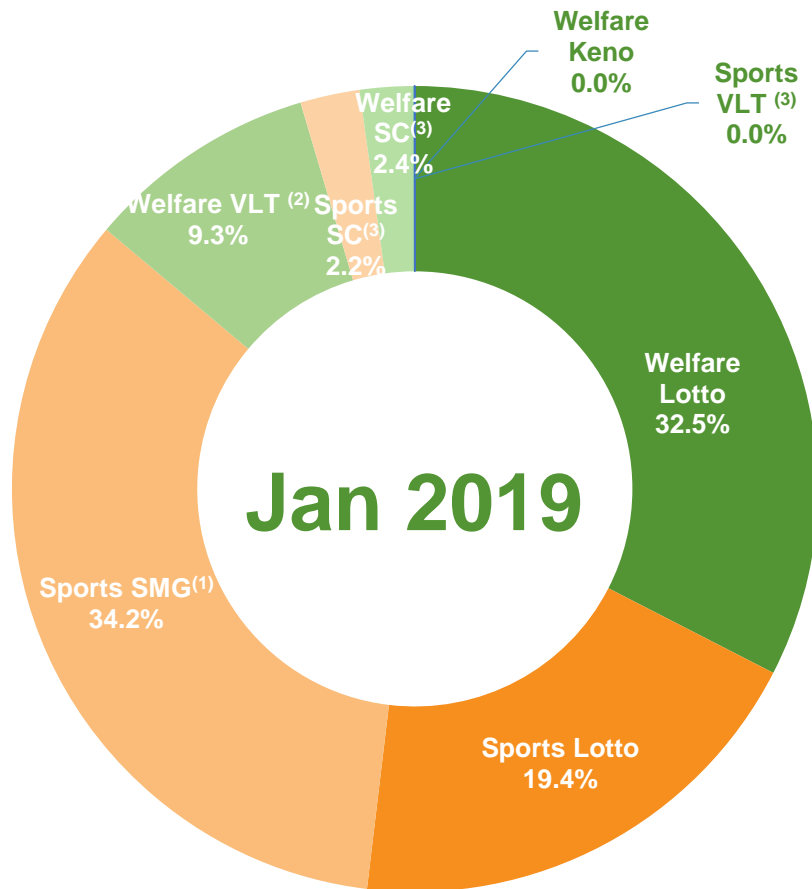
(RMB bn)



Source: Ministry of Finance

# China Lottery Sales in Jan 2019

Welfare Lottery sales increased by 9.7% YoY to RMB 21.219 billion in Jan 2019, Sports Lottery sales increased by 40.8% YoY to RMB 26.736 billion in Jan 2019.



	Jan 2019 Sales (RMB bn)	YoY (%)	Percentage of Total Sales (%)
<b>Welfare Lottery</b>	<b>21.219</b>	<b>9.7%</b>	<b>44.2%</b>
▪ Lotto	15.607	8.7%	32.5%
▪ Welfare VLT	4.458	11.1%	9.3%
▪ Scratch cards	1.142	19.6%	2.4%
▪ Keno	0.011	-13.9%	0.0%
<b>Sports Lottery</b>	<b>26.736</b>	<b>40.8%</b>	<b>55.8%</b>
▪ Lotto	9.279	-6.0%	19.4%
▪ SMG	16.414	100.8%	34.2%
▪ Scratch cards	1.042	10.2%	2.2%
▪ Sports VLT	0.000	-35.7%	0.0%
<b>Total Lottery</b>	<b>47.955</b>	<b>25.1%</b>	<b>100.0%</b>